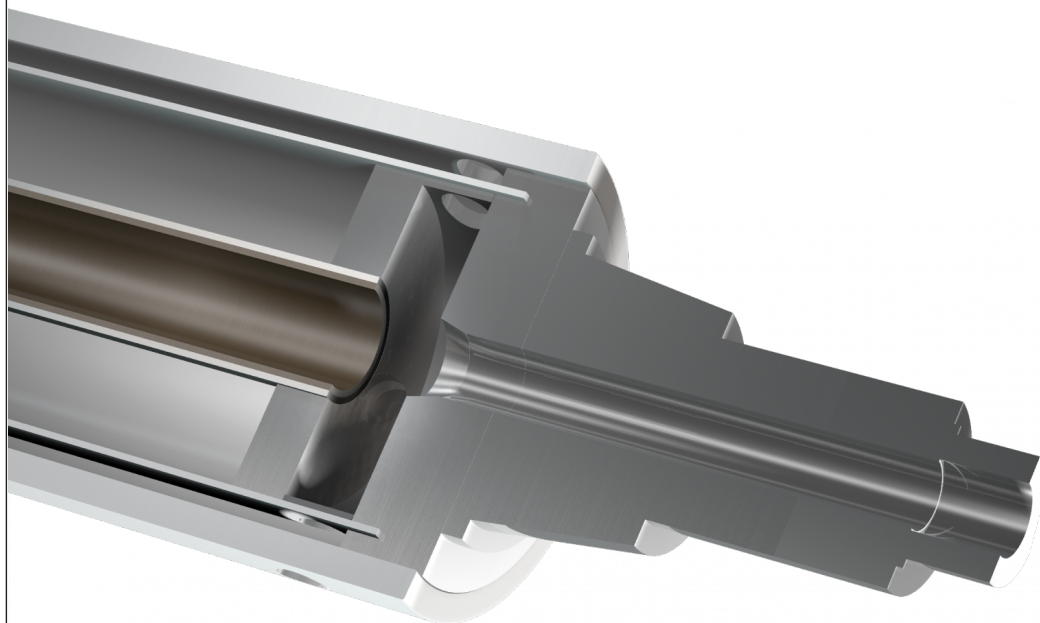


Cooled/heated steel mandrels



mechanical
resistance



quality
certified

Rossini designs and manufactures special steel mandrels with temperature control (in cooling or heating version) in Speedwell configuration for flexographic printing and lamination machines; calender rollers for cooling or heating plastic films. Rossini's technical office grants a proper design of the component upon OEM's specifications/drawings with or without spiral for fluid circulation, with simple or double crossed flow, with fluid in and out from the same side or from opposite sides. The mandrel is supplied with tempered bushes, induction tempering or any other thermal treatments on the shafts, dynamic balanced according to the OEM's drawing.

Rossini S.p.A. provides no warranties that the contents of this document demonstrate, in particular, the fitness of the products it contains for any specific purpose; we therefore ask customers to verify in advance that the product's characteristics are suitable for its intended use. Rossini S.p.A. reserves the right to update this publication and periodically modify its contents, including technical/commercial information, without further notice of the amendments or changes made. This document and any logos, trademarks and specifications etc. it contains are protected by copyright laws with all rights reserved.