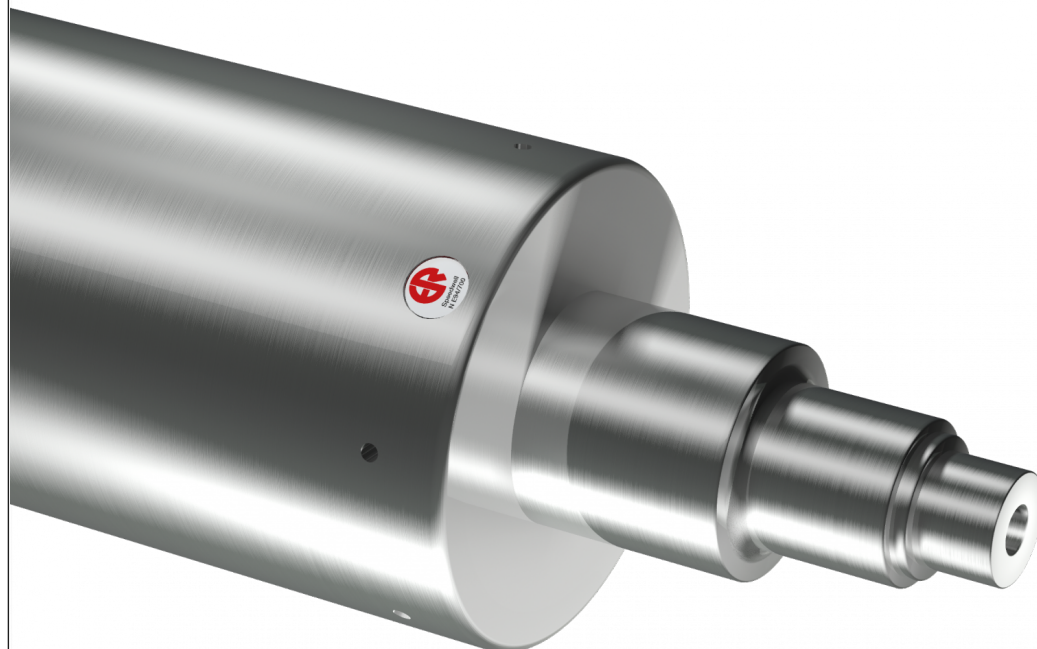


# Parallel steel mandrels



mechanical  
resistance



quality  
certified

Parallel pneumatic steel mandrels for mounting plate sleeves, carriers and anilox for flexographic printing machines and special mandrels for plate mounting stations. Manufactured with the latest available technologies for the mechanical works, welding process and assembly, the Rossini mandrel has several advantages like the correct design related to the applied loads defined by OEM machine manufacturer and a close chamber distribution system for the compressed air distribution; moreover the perfect grinding of the surface that can be supplied with chrome, nickel coating according to the manufacturing drawing.

Rossini S.p.A. provides no warranties that the contents of this document demonstrate, in particular, the fitness of the products it contains for any specific purpose; we therefore ask customers to verify in advance that the product's characteristics are suitable for its intended use. Rossini S.p.A. reserves the right to update this publication and periodically modify its contents, including technical/commercial information, without further notice of the amendments or changes made. This document and any logos, trademarks and specifications etc. it contains are protected by copyright laws with all rights reserved.